

Medium Intensity Aviation Obstruction Light type B

Application

Widely used in various fields of the Air Force, civilian airports and obstacle free airspace, helipads, iron tower, chimney, ports, wind power plants, bridge and city high-rise buildings where require aviation warning.

Usually used above 45m and less than 150m buildings, could use alone, also could use with Low intensity OBL type B together.



Main photo

Key Feature

(Low power consumption, easy installation, high brightness, small volume)

- Cover of the light adopts PC with anti-UV which is high efficiency light transmission up to 90%, quite high impact resistance and fit the bad environment very well.
- House of the light is made of aluminum alloy and painted by spraying plastics, the structure is high strength, resistance to corrosion.
- Use the special optical reflector design, the visual range further, angle more accurate, no light pollution.
- Light source adopts import high quality LED, lifespan up to 100,000 hours, low power consumption, energy efficiency and environmental protection.
- Based on the single chip computer control, automatic identification sync signal, do not distinguish the main light and auxiliary light, and also could be controlled by the controller.
- Same power supply voltage with synchronous signal, integrate in power supply cable, eliminate the damage by error installation caused.
- Used the photosensitive probe fit for the natural light spectrum curve, automatic control light intensity level.
- The circuit of the light has surge protection, so that the light is suitable to a harsh environment.
- Integral structure, protection level of Ip65.
- GPS synchronizing function is available.



Bottom



Top

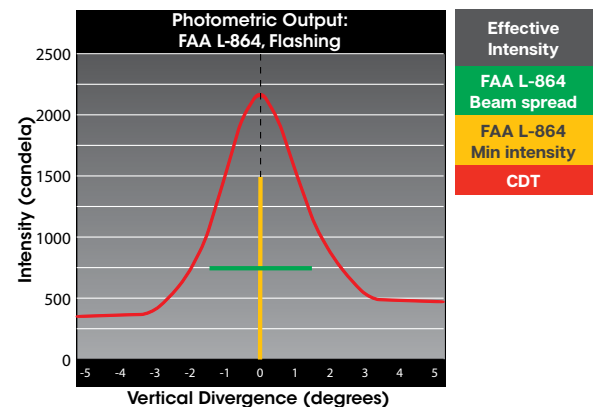
Option Feature

- Optional GSM Monitoring
- Optional GPS Synchronization
- Optional IR Remote Control

Compliance

- FAA L-864
- International Civil Aviation Organization (ICAO), Aerodrome Design and Operations, Annex 14, Volume 1, Sixth Edition, dated July 2013

Photometric Output



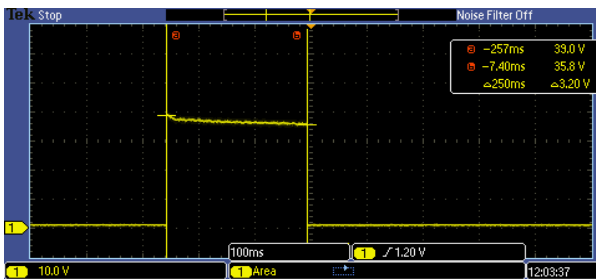
Medium Intensity Aviation Obstruction Light type B

Calculated Effective Intensity Data

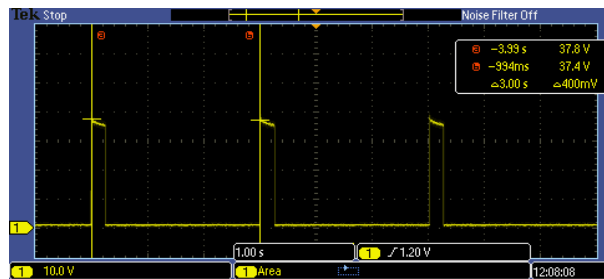
| Vertical Position | Horizontal Position (deg.) | | | | | | | | | | | |
|-------------------|----------------------------|------|------|------|------|------|------|------|------|------|------|------|
| | 0 | 30 | 60 | 90 | 120 | 150 | 180 | 210 | 240 | 270 | 300 | 330 |
| 3U | 730 | 767 | 792 | 810 | 823 | 809 | 870 | 907 | 991 | 982 | 960 | 850 |
| 2U | 1080 | 1111 | 1036 | 942 | 1067 | 1196 | 1227 | 1400 | 1476 | 1396 | 1173 | 1249 |
| 1.5U | 1231 | 1236 | 1231 | 1151 | 1280 | 1373 | 1564 | 1702 | 1680 | 1751 | 1782 | 1556 |
| 1U | 1716 | 1622 | 1493 | 1409 | 1516 | 1809 | 1924 | 2102 | 2053 | 1987 | 1973 | 1804 |
| 0 | 2311 | 2240 | 2222 | 2258 | 2156 | 2311 | 2404 | 2449 | 2360 | 2244 | 2142 | 2231 |
| 1D | 2013 | 2022 | 2036 | 2244 | 2200 | 2240 | 2249 | 2142 | 2084 | 2080 | 2004 | 1867 |
| 1.5D | 1724 | 1769 | 1804 | 2009 | 2040 | 2093 | 1947 | 1867 | 1827 | 1827 | 1778 | 1640 |
| 2D | 1467 | 1524 | 1578 | 1702 | 1716 | 1667 | 1613 | 1476 | 1453 | 1484 | 1431 | 1298 |
| 3D | 1102 | 1147 | 1187 | 1191 | 1107 | 1022 | 1004 | 942 | 808 | 819 | 754 | 728 |
| 10 D | 11 | 12 | 12 | 9 | 11 | 7 | 8 | 15 | 20 | 20 | 20 | 19 |

At all radials, there must be a peak beam intensity of 2,000 cd \pm 25% at 0 degrees, and a contiguous 3 degree beam spread of 750 cd minimum.

Flash Duration



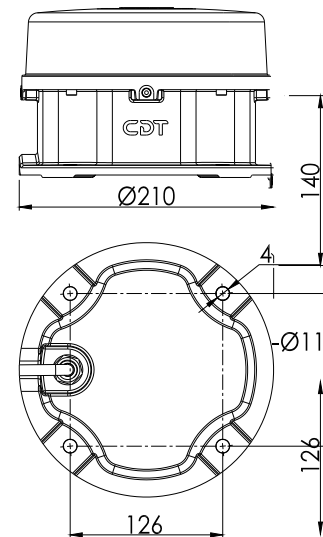
Flash Period



Parameter

| Item | Parameter |
|------------------------------|--|
| Standard | FAA , ICAO Standard |
| Operating voltage | AC220V (Other available) |
| Power consumption | \leq 10W |
| Flashing frequency | 20 ~ 60times/min |
| Light source | Red LED |
| Light intensity | 2000cd (\pm 25%) |
| Lifespan | > 100,000hours |
| Emitting color | Red |
| Beam angle | 360° horizontal beam angle \geq 3° vertical beam spread |
| Method of synchronization | Same power supply voltage signal mode |
| Overall size(mm) | Φ 210mm \times 140mm |
| Installation size(mm) | 126mm \times 126 mm -4 \times M10 |
| Ingress protection | Ip65 |
| Lightning protection level | 10KA |
| Light controlled sensitivity | 100Lux |
| Operating temperature | -40°C ~ 55°C |
| Net weight | 3.5kg |
| Wind load | 80m/sec |

Structure chart



Medium Intensity Aviation Obstruction Light type B



Mounting Chart

